

# PRINTRONIX®



## P8000

Line Matrix  
Printers

Arabic Context Analyzer Inside



Flexible Design | Adaptable Functionality | Manageable Savings





## P8000 Cartridge Printers Deliver New Designs, Enhanced Convenience and Lower Operating Cost

Printronic introduces design enhancements and improved functionality with the P8000 Cartridge Printer series to achieve the broadest flexibility, greatest compatibility and lowest ownership cost of virtually any other print technology. The series builds upon the workhorse tradition of all Printronic line matrix technology delivering maximum uptime, low cost of ownership, and reliable performance. The P8000 series is the ideal solution for buyers looking to minimize operating expense without sacrificing output reliability, regardless of operating environment.

### FLEXIBLE DESIGN

Printronic modified its industry-leading line matrix technology to address evolving user requirements.

- **Modular enclosures** occupy a smaller footprint while delivering location and installation flexibility
- **Sheet metal construction** for increased durability and better acoustics
- **New user interface** with larger LCD screen, graphical display and intuitive menu navigation
- **Remote printer diagnostics** let you monitor printer status and remotely configure settings & firmware

### ADAPTABLE FUNCTIONALITY

The P8000 Cartridge series adapts to almost any supply-chain or back-office environment.

- **USB 2.0**, Serial, Parallel and Ethernet are included as standard features.
- **PowerPrint™** delivers improved print quality and print darkness on multi-part forms by increasing impact energy. Comes standard on P8000 printers with a 1,000 line-per-minute print speed.
- **Arabic Context Analyzer (ACA)** software lets you maximize the capabilities of either family of Printronic printers so you can print documents with the Arabic alphabet.

### MANAGEABLE SAVINGS

The P8000 Cartridge Printer is a smart purchase

- **Lowest cost of ownership** of any print technology.
- **Durable design minimizes** downtime related to unfavorable environmental conditions.
- **Backwards-compatible cartridge ribbons** reduce inventory management costs.
- **Energy efficient technology** lowers idle power consumption and boosts operating efficiency.

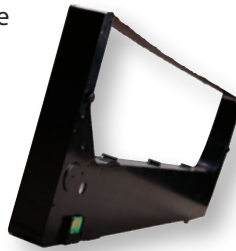
# Five Reasons Your Company Needs Line Matrix Printers

# 5

In a world of expensive to maintain laser printers it is smart to consider the latest advancement in line matrix cartridge printing before choosing a print technology. Printronix has consistently pioneered new innovations to ensure this technology remains highly competitive and relevant for today's printing applications. Here are five reasons to consider the latest generation of Line Matrix Cartridge printers.

## 1 Lowest Cost of Ownership

- The average lifespan of a line matrix printer is 7 to 10 years as compared to only 3 years for laser printers.
- Cartridge Ribbons are up to six times less expensive than laser toner cartridges.
- As print volume increases, consumable savings grow dramatically.
- Cartridge ribbons give users up to 20% improvement in consumable cost per page over spool type ribbons used by legacy line printers.



## 2 Productivity

- Line Matrix printers deliver unmatched, up-time and reliability.
- Document integrity is more easily maintained with continuous forms media as opposed to cut sheets.
- PrintNet Enterprise, our remote printer management utility, delivers visibility and remote control for all network connected devices.

## 3 Reliable Performance in Any Environment

- Line Matrix printers perform reliably in non-climate controlled environments where temperature, humidity and airborne contaminants cause form feeding and print quality issues for other print technologies.

## 4 Application Adaptability

- Where GUI design and dynamic data driven overlays, messages, barcodes, logos, etc. are required, thanks to our strategic software vendor alliances, there are solutions available that natively support the graphics print language of our printers.
- Line Matrix remains the best technology for printing multi-part forms, oversize media, labels, card stock, and other non-typical media types.

## 5 Environmentally Friendly

- When compared to laser printers, Line Matrix Printers consume as little as 1/3rd the energy when printing, and 1/7th the energy when in standby mode.
- Throughout their life span, Line Matrix Printers will generate far less landfill waste from consumables, packaging and printer hardware.
- Cartridge ribbons emit none of the fine particulate emissions generated by laser printers.



DISTRIBUTION



AUTOMOTIVE



MANUFACTURING



TRANSPORTATION



FINANCIAL

# P8000

## LineMatrix Printers



The flagship model in the series, the P8000 Open Pedestal is a dependable line matrix printer that delivers maximum uptime and lowest total cost of ownership. Its compact size makes it easy to move within your environment and is ready to plug into your network and start printing from day one.

PRINTER CABINET STYLE	Open Pedestal	
Standard Features & Options	P8005 / P8010	
Integrated Print Management	Standard	
Ribbon Life Monitor	Standard	
Black back forms paper out sensor	Option	
Rear slide out paper drawer		
Cabinet front paper access		
Extended forms support doors		
High rear paper tray	Option	
Low rear paper tray	Standard	
Acoustic shroud	Option	
Dimensions	With Basket	Without Basket
Height	35.9" (911.8 mm)	35.9" (911.8 mm)
Width	25.8" (655.3 mm)	25.8" (655.3 mm)
Depth	29.1" (739.1 mm)	19.1" (485.1 mm)
Printer Weight	115 lbs (52.1 Kg)	115 lbs (52.1 kg)
Shipping Printer Weight	165 lbs (74.8 Kg)	165 lbs (74.8 kg)
Environmental Noise	P8005	P8010
Acoustic Noise (dBA) per ISO 7779	60.5	65.5
PRINTER MODEL NUMBER	P8005	P8010
Print Speed	LPM, upper case/lower case characters	
High Speed (Draft)	500/428	1000/856
Data Processing	375/300	750/600
Near Letter Quality	200/154	400/306
Graphics Speed	Inches per minute	
60 x 48 dpi	63	125
60 x 72 dpi	42	83
90 x 96 dpi	21	42
Paper Feed Speed	Inches (mm) per second	
Speed	12	20





The P8000ZT Zero Tear is the specialized cartridge line matrix printer choice for customers using pre-printed and serialized documents that require print on demand, single form tear-off usability. The Zero Tear is designed to eliminate wasted forms and reduce operating costs.

PRINTER CABINET STYLE	Open Pedestal Zero Tear	
Standard Features & Options	P8005ZT / P8010ZT	
Integrated Print Management	Standard	
Ribbon Life Monitor	Standard	
Black back forms paper out sensor		
Rear slide out paper drawer		
Cabinet front paper access		
Extended forms support doors		
High rear paper tray	Standard	
Low rear paper tray		
Acoustic shroud		
Dimensions	With Basket	Without Basket
Height	42.04" (1067.8 mm)	42.04" (1067.8 mm)
Width	25.8" (655.3 mm)	25.8" (655.3 mm)
Depth	31.9" (810.2 mm)	19.1" (485.1 mm)
Printer Weight	145 lbs (66 Kg)	N/A
Shipping Printer Weight	190 lbs (86 Kg)	N/A
Environmental Noise	P8005ZT	P8010ZT
Acoustic Noise (dBA) per ISO 7779	70	70
PRINTER MODEL NUMBER	P8005ZT	P8010ZT
Print Speed	LPM, upper case/lower case characters	
High Speed (Draft)	500/428	1000/856
Data Processing	375/300	750/600
Near Letter Quality	200/154	400/306
Graphics Speed	Inches per minute	
60 x 48 dpi	63	125
60 x 72 dpi	42	83
90 x 96 dpi	21	42
Paper Feed Speed	Inches (mm) per second	
Speed	12	20

# P8000

## Line Matrix Printers



The P8000 Enclosed Cabinet is the preferred choice for print environments where acoustic emissions need to be kept to a minimum. Its modular design, wide selection of paper handling options, and reliable performance make it ideal for office environments or noise adverse areas running large, unattended print applications.

PRINTER CABINET STYLE	Cabinet			
Standard Features & Options	P8205 / P8210		P8215 / P8220	
Integrated Print Management	Standard		Standard	
Ribbon Life Monitor	Standard		Standard	
Black back forms paper out sensor	Option		Option	
Rear slide out paper drawer	Option		Option	
Cabinet front paper access	Option		Option	
Extended forms support doors	Option		Option	
High rear paper tray				
Low rear paper tray				
Acoustic shroud				
Dimensions	Cabinet			
Height	40.5" (1028.7 mm)			
Width	27" (685.8 mm)			
Depth	29" (736.6 mm)			
Printer Weight	200 lbs (90.7 Kg)			
Shipping Printer Weight	265 lbs (120.2 Kg)			
Environmental Noise	P8205	P8210	P8215	P8220
Acoustic Noise (dBA) per ISO 7779	50	50	52	52
PRINTER MODEL NUMBER	P8205	P8210	P8215	P8220
Print Speed	LPM, upper case/lower case characters			
High Speed (Draft)	500/428	1000/856	1500/1289	2000/1700
Data Processing	375/300	750/600	1125/900	1500/1200
Near Letter Quality	200/154	400/306	600/459	800/615
Graphics Speed	Inches per minute			
60 x 48 dpi	63	125	187	250
60 x 72 dpi	42	83	127	167
90 x 96 dpi	21	42	61	83
Paper Feed Speed	Inches (mm) per second			
Speed	12	20	25	38.5

# CONNECTIVITY

## Reliable Connectivity, Seamless Installation and Robust Remote Printer Management



### CONTROL YOUR ENTIRE GLOBAL PRINTING NETWORK FROM ANYWHERE =

Achieve higher efficiency and improve your company's productivity with PrintNet Enterprise™ remote printer management software. PrintNet Enterprise is a valuable time-saving tool for your mission critical operation.

**PRINTNET WEBPAGE** = Printer management made simple. You now have access and control of your printer through any internet browser. Full configuration of printer menus, including uploading and downloading of saved configurations from your PC. Easy file management for quick downloads and uploads of forms, fonts, and logos. Printer status monitoring for real time updates. Diagnostics capabilities including job capture and firmware download.

**PRINTNET ENTERPRISE™** = Total control. Your worldwide print operation is at your fingertips with PrintNet Enterprise. By combining the recommended integrated Ethernet adapter and Java-based software, remote printer management extends your reach from anywhere you have a computer and connectivity.

- Configure and monitor printers from any desktop computer and any location in the world
- Designate events and be alerted to printer issues with email, pager or mobile phone alerts
- Complete compatibility with any Printronix product when equipped with the optional Ethernet



# P8000 Product Specifications

## CONNECTIVITY/INTERFACES

Standard: USB 2.0 and Serial RS-232  
Ethernet - 10/100 Base T  
Parallel - IEEE-1284 Centronics

## CHARACTER PITCH (characters per inch)

10, 12, 13.3, 15, 16.7, 17.1, 20

## LINE SPACING (lines per inch)

6, 8, 10.3, n/72, n/216

## GRAPHICS RESOLUTION

240 dpi Horizontal, 288 dpi Vertical (max)

## DOT SIZE

16.7 mil (.42mm)

## ACA EMULATIONS

Standard: Epson-FX, Epson LQ, Proprinter-XL, CITHO, HP, ANSI

## CODE PAGES

99 plus character sets including ECMA Latin 1, DEC Multinational, IBM Code Page 437 and 850, OCR A, OCR B, UTF8 encoded Unicode. Support all the Arabic code pages including ASMO, ASCII, NCR, WANG, Arabic Windows, User Defined, and more.

## CHARACTER STYLES

Bold, italic, double wide, double high, overstrike, underline, subscript and superscript

## FONTS

NLQ Serif, NLQ Sans Serif, Data Processing, High Speed, OCR A, OCR B

Arabic Fonts: Draft, data processing, data processing enhanced, Nashk, Kofi, Asri, Haydar, Haydar, Hadeeth, Req'a, Nashk Bold, Kofi Bold

## BARCODES

30 resident symbologies, including Code 39, EAN 8/13, UPC A/E, Intelligent Mail, Postnet, Royal Mail, Interleaved 2 of 5, PDF 417, Data Matrix

## PRINTER SOFTWARE

Printronix PrintNet Enterprise remote management software, SAP device support

## PRINTER DRIVERS

Microsoft Window XP/Vista/2003/2008/7

## POWER VOLTAGE

AC input range 100-240 VAC, 50/60 HZ

## POWER CONSUMPTION

Less than 5 watts

## POWER CONSUMPTION (typical-maximum)

- P8005 / P8205 280 watts Max 320 watts  
- P8010 / P8210 300 watts Max 320 watts  
- P8215 435 watts Max 601 watts  
- P8220 450 watts Max 601 watts

## OPERATING TEMPERATURE

Environmental Operating Temperature 50° to 104° F, 10° to 40° C

## PAPER TYPE

Continuous, fan folded, edge-perforation

## PRINT WIDTH

13.6" (345mm)

## MEDIA LENGTH

3" (76mm) to 12" (305mm)

## MEDIA THICKNESS MULTI-PART

0.025" (0.64mm) max

## MEDIA COPIES

Up to 6 part; up to 4 part for Zero Tear models

## MEDIA WIDTH

- 3" (76mm) to 17" (432mm)  
- For Zero Tear models: 7.5" (191mm) to 12" (305mm) for up to 4 part carbon and 6 part carbonless; 7.5" (191mm) to 16" (406mm) for up to 3 part carbon and 4 part carbonless

## MEDIA WEIGHT SINGLE PLY

- 15 lb. Bond to 100 lb. Tag (56 to 163 gm/M<sup>2</sup>)  
- For Zero Tear models: 18 lb. Bond to 100 lb. Tag (67.7 to 163 gm/M<sup>2</sup>) for forms up to 12" (305mm) in width; 20 lb. Bond to 100 lb. Tag (75.2 to 163gm/M<sup>2</sup>) for forms up to 16" (406mm) in width

## MTBF

10,000 hours at 25% duty cycle and 25% page density

## CONSUMABLE/RIBBONS

Standard Life Cartridge Ribbon 17,000 pages  
Extended Life Cartridge Ribbon 30,000 pages  
Page yield based on ISO LSA Page, 8.5" x 11" letter-size, approximately 5% coverage

## ARABIC CONTEXT OPERATING MODES

Bilingual Operating Modes:

7-bit Arabic: with SWCs  
with ESCs  
8-bit Arabic: pure  
with neutrals  
with SWCs  
with ESCs



# PRINTRONIX®

PRINTRONIX NEDERLAND

BV BIJSTERHUIZEN 11-38

6546 AS NIJMEGEN - THE NETHERLANDS

EMEACONTACT@PRINTRONIX.COM